

***In vivo* Pharmacology:** **Keyhole Limpet Hemocyanin Induced Delayed Type Hypersensitivity in the Rat (KLH-DTH)**

Species, strain, sex: rat, Lewis, male
 No. of animals per group: n=8
 Pharmacological control: cyclosporine A, dexamethasone and tacrolimus
 Routes of administration: upon request
 Treatment mode: prophylactic, therapeutic
 Duration of dosing: upon request

Animals are immunized with keyhole limpet hemocyanin to induce a hypersensitivity reaction. This leads to elevated tissue concentrations of IL-1 β (Th1) and IL-4 (Th2) cytokines.

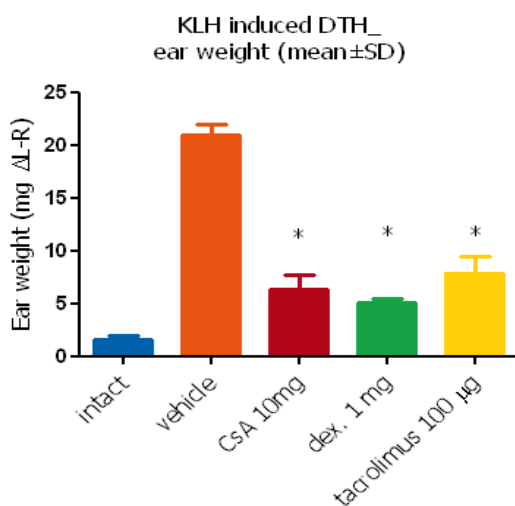
Main read-outs:

- ear swelling
- caliper measurement
- weight

Facultative read outs:

- cytokines in tissue homogenates
- histopathology

Ear or punch biopsy weight is measured at the end of the study. Ears and other selected tissues are collected to be subsequently analyzed or sent to the client, as requested.



*p<0,05 vs. vehicle
 Kruskal-Wallis test, Dunn's multiple comparison test

Inflammation in ear

